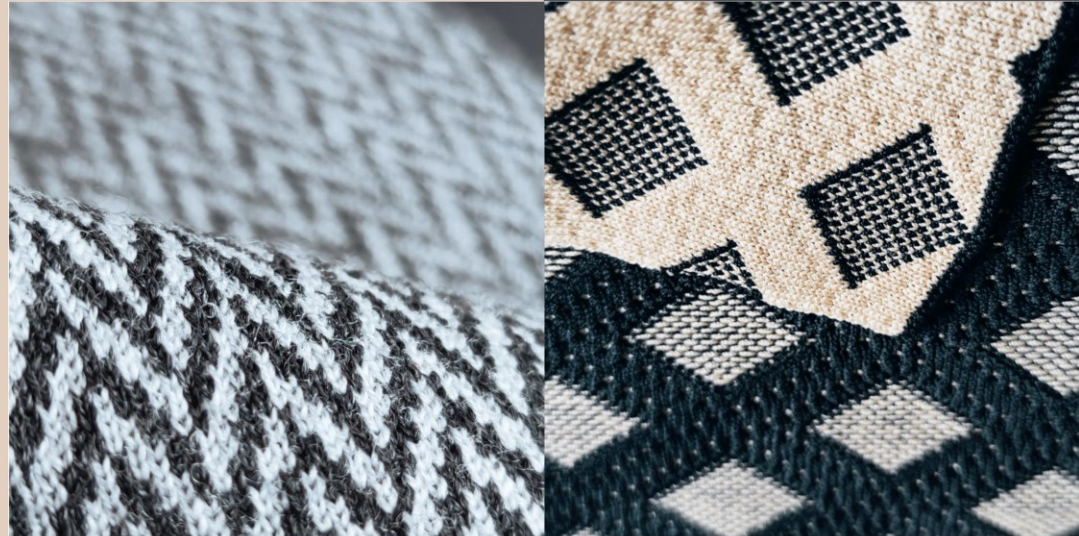




ALPHA TEX

Factory Profile

Alphatex focuses on producing and delivering creative, top-quality knitwear and woven luxury goods at a competitive price level.



Website :

<https://www.alphatexchina.com/>



Background :

Alphatex is a fully fashioned luxury knitwear and woven goods manufacturer based in Beijing, China since 2002. Our goals are to produce the highest quality fully fashioned knitwear and high end cut and sew for design driven brands. We are clearly focused on the product development and production needs of iconic brands such as Givenchy, G/Fore, Chloe, See by Chloe, Paul Smith, Peter Millar, Chinti and Parker, Eric Bompard to mention some of our key clients. Alphatex is accredited by many global groups (Richemont, LVMH, Kering) and apart from our reputation for technical skill in knitting, we have been praised for our approach to CSR, sustainability and vigilant Intellectual Property protection.



In 2020, Alphatex completed our third phase expansion with unveiling of our new building doubling our floor area and increasing the number of Stoll machines to 45 with a capacity for 400,000 pieces a year across all gauges from 3GG to 18GG. Our skilled technicians are particularly adept at fine gauge knitting and complex combinations of knit and woven construction. Special techniques such as hand embroidery, crochet, handknitting can also be managed in house and printing can be done externally.

Year established:

Established in Beijing, China in 2002

Head Office :

Alphatex Knitting Co. Ltd,

No.30, Linhe Street,

Linhe Industry Development Zone,

Shun Yi District, Beijing, 101300, China

Product Development & Merchandising Manager : (contact for product development / production purpose)

Cathy Li

cathyli@alphatexchina.com

+86 10 89451188 ext.137

About us

Managing Director : (contact for sales / sampling purpose / business related matter)

Chris Murphy

chrismurphy@alphatexchina.com

+86 10 89451188 ext.156

Business Development :

(contact for sales / sampling purpose / business related matter)

sales@alphatexchina.com

Client list

Peter Millar

PETER MILLAR

Paul Smith

Paul Smith

See By Chloe

SeeBy
Chloé

Akris

A-K-R-I-S

Givenchy

GIVENCHY
PARIS

Chloe

Chloé

J.Lindeberg

J.LINDBERG

Eric Bompard

ERIC BOMPARD

G Fore

G/FORE

Carven

CARVEN

Christopher Kane

CHRISTOPHER KANE

Sandro

SANDRO

Greyson

GREYSON®

ORLEBAR BROWN

ORLEBAR
BROWN

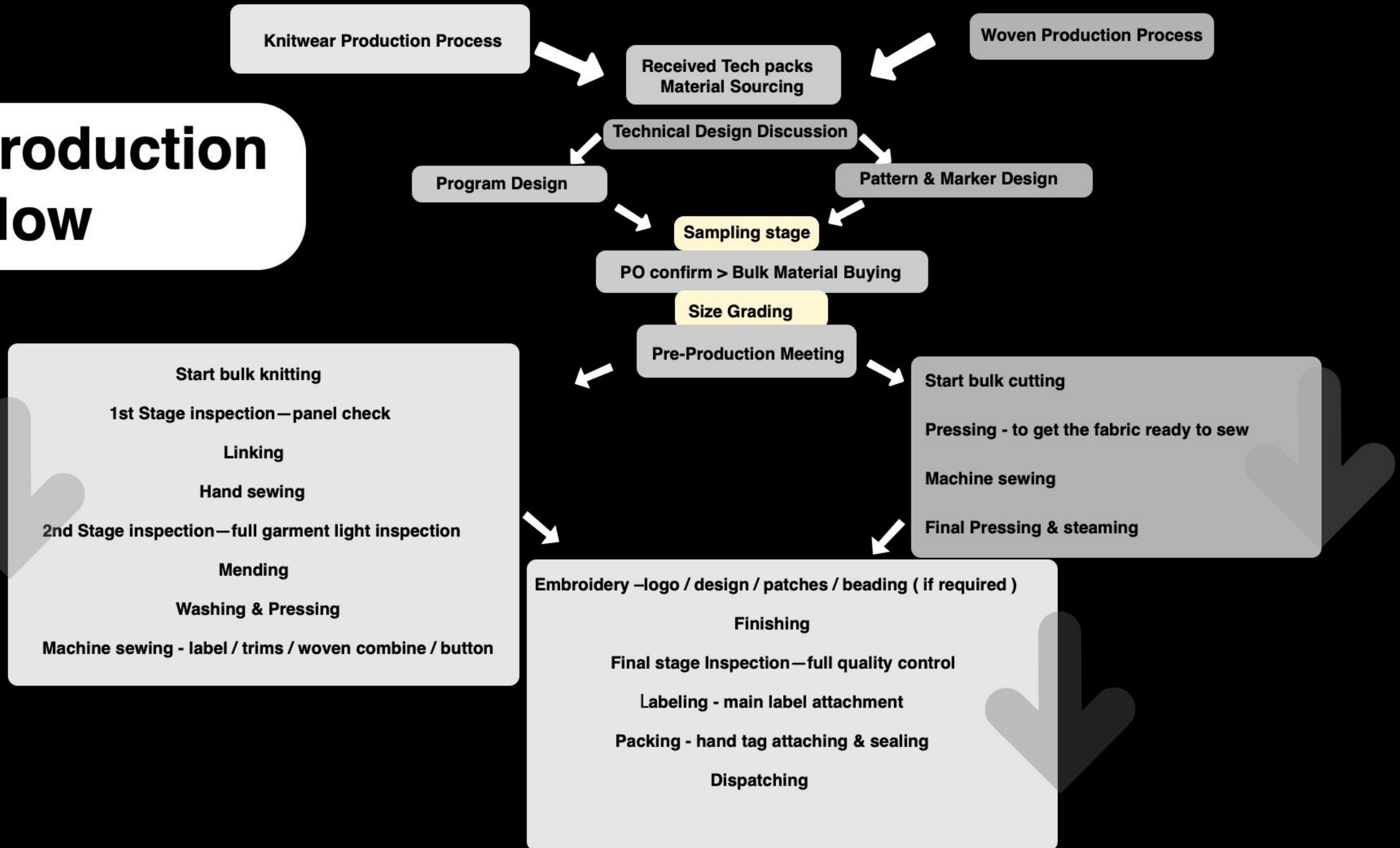
Belstaff

Belstaff

St John

ST. JOHN

Production Flow



Employees :

Total number of staff : 360

Knitting machines

Stoll Knitting Machine Range :
3 gg chunky —18 gg fine

Machine Unit : 45 sets

Machine & Staff



Hand knitting machines

To produce special hand knit style/
heavy fabric

Hand Knitting Machine Range: 1.5 gg
chunky—12 gg fine

Machine Unit : 151 sets

Over lock machines

Button hole machines

Fabric cutting machines

Fabric inspection machines

Linking machines

Linking Machine Range : 4
– 24gg
Machine Unit : 180 sets
(12 sets COMPLETT
imported from Italy)

Chain stitch machines

Cover stitch machines



Industrial sewing machines

Machine Unit : 65 sets

Embroidery machines

Yarn pre-twist machines



Sample & Production

Sample / swatch lead
time

Lead time : 1 week
(with all materials on hand)

SMS lead time

Lead time : 1-2 weeks
(with all materials on hand)

Bulk lead time

Lead time : 7 – 9 weeks
(with all materials on hand)

Minimum order quantity per
design/article : 200 pieces per
style

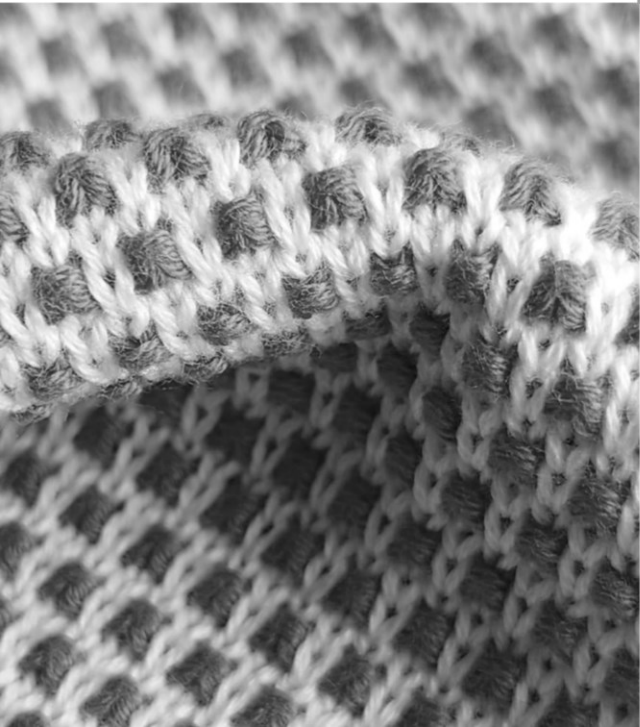
Minimum order quantity per
colour : 100 pieces per colour

Minimum order quantity per
prints : 200 pieces per style

Monthly capacity : 60000 pieces

Outsource technique

- Print
- Piece Dye





Special Techniques

Embroidered fabric / Printed
over knitted fabric /

Machine embroidery or Patches
embroidered over knitted fabric
/ Hand crochet

Techniques

Material Range

Cashmere / Merino Wool / Wool / Silk /
Cotton / Alpaca / Mohair / Polyester /
Polyamide / Nylon / Lurex / Metallic / Fancy
Yarn / Elastic / Viscose / Recycle Material /
Linen / Rayon / Mix Material ...etc



Product Range

Womenswear / Menswear / Kidswear / Uniforms / Sportswear / Knitted Accessories / Woven
production

Vest / Roll neck / Button , Zip Cardigan / Cashmere jumper/ Jacquard , Intarsia , sweater /
Classic Crewneck , V-neck / Polo / Bomber / Quarter Zip jumper / Cape / Wrap / Knitted Scarf /
Knitted Hat / etc..

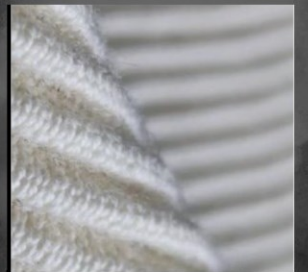
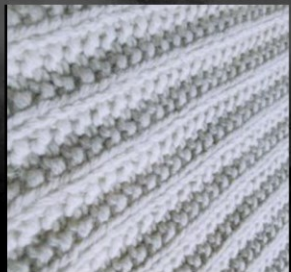
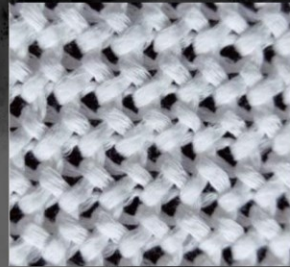
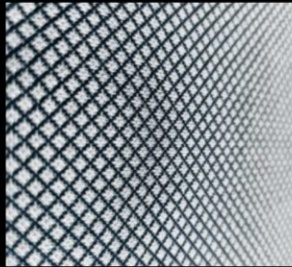
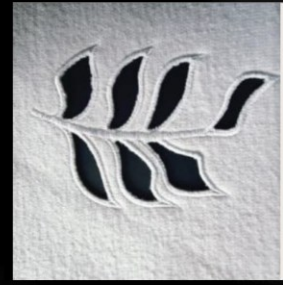
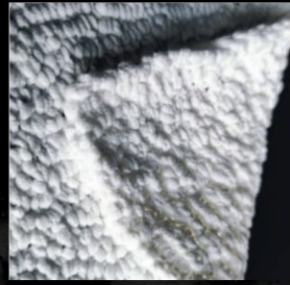
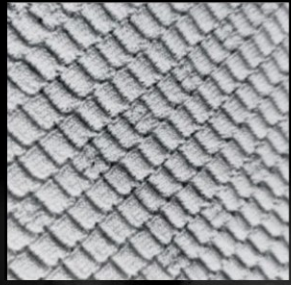
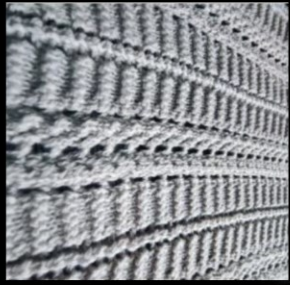
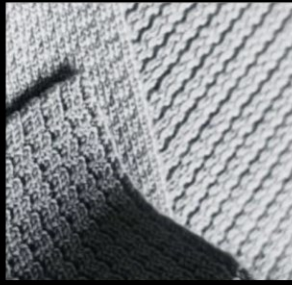
Outwear / Dress / Skirt / Shirt / Blazer / Shorts / Puffer / etc..

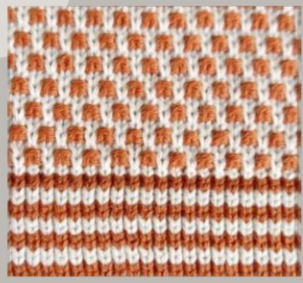
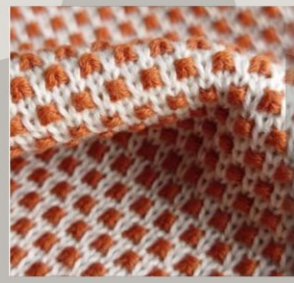
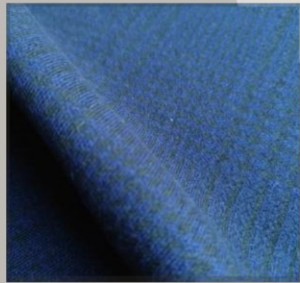
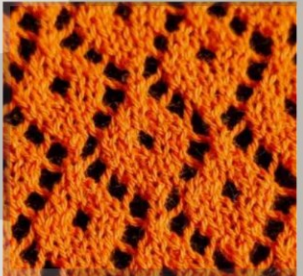
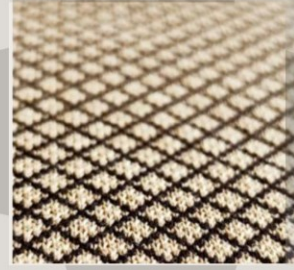
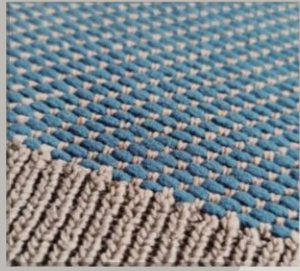


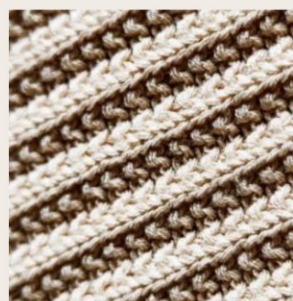
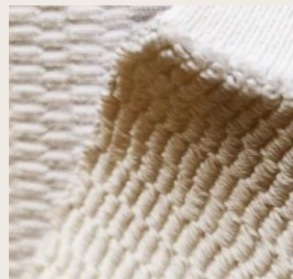
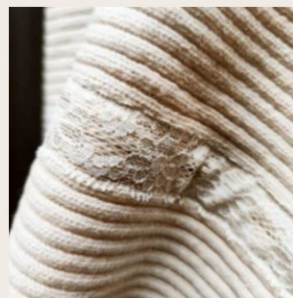


Stitches examples

Variation of Fine & chunky Gauge Texture Stitches







THANK YOU FOR LOOKING.

We look forward to providing you with our quality products and excellent customer service .